



Preserving Pennsylvania

Volume 12

Number 1

The Newsletter of Preservation Pennsylvania, Inc.

1998

PENNSYLVANIA AT RISK 1998

Special Report: Endangered Schools

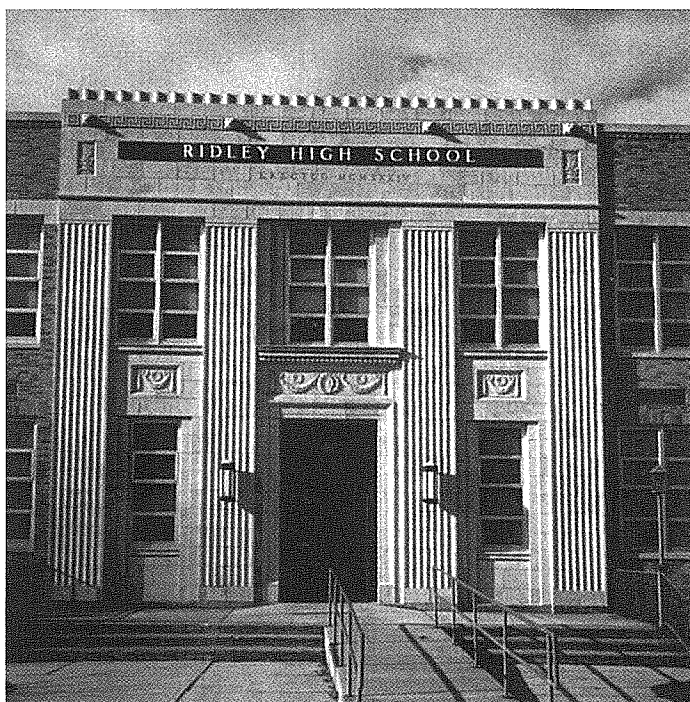
Why can't historic schools continue to serve their communities as places of education?

Over the years, many fine educational buildings have been converted to offices, apartments, senior citizen housing, and other new uses. Many historically significant schools have also been lost or are at risk because a new use can not be found and because they have been deemed unfit for continued educational use.

Arthur Ziegler, president of Pittsburgh History & Landmarks Foundation and a nationally recognized leader in the preservation movement, recently approached Preservation Pennsylvania for our assistance in questioning the Pennsylvania Department of Education (PDE) guidelines that have resulted in the abandonment of countless schools across the commonwealth.

This special issue of *Pennsylvania At Risk* features historic school buildings threatened by policies that discourage preservation and encourage abandonment and demolition. Recent discussions involving Preservation Pennsylvania, concerned citizens, the PDE and the Governor's office have initiated a review of PDE guidelines that put historic school buildings at risk. Our goal is to level the playing field to give historic school buildings a chance to continue to serve their communities as places of learning.

While our primary focus is on schools currently threatened by policies of the Department of Education, we also include in this year's endangered list examples of former school buildings threatened by neglect, abandonment, development pressures, and other government policies.



The original portion of Ridley Senior High School (Ridley Park, Delaware County) with its imposing neoclassical-inspired facade, was constructed in 1934.

Plans for a new high school include demolition of the 1934 section of the building for parking. A group of residents within the school district have organized the Citizens Forum of the Ridley School District to call for a reconsideration of both the new building and demolition of the 1934 structure.

The group believes the building can be renovated for continued educational use.

Pennsylvania Department of Education Guidelines Result in School Abandonment

by Arthur P. Ziegler, Jr.

Recently, Pittsburgh History & Landmarks discovered "guidelines" of the Pennsylvania Department of Education (PDE) that powerfully and negatively affect local school districts in decisionmaking about the reuse of existing school buildings, many of which are neighborhood schools and many of which are architecturally significant.

First, the PDE is opposed to almost all "ordinary construction." This means that any school of more than one story that has interior wood framing does not qualify for state reimbursement if the school district wishes to restore it for continued use.

This flies in the face of local building codes and the state labor and industry codes and national (BOCA) building codes, all of which indicate that two- and three-story buildings, with up-to-date sprinkler systems and appropriate enclosed fire stairs, are safe to use. In fact, our Pennsylvania Department of Labor and Industry code permits the use of a two-story "ordinary construction" building for educational use if the fire rating on the building is one-hour and totally protected by an automatic system.

continued on page 6

PRESERVATION PENNSYLVANIA

Board of Directors

David Lewis Taylor *Brookville*
President

Ann N. Greene *Philadelphia*
Vice President

Denise Illig Robison *Erie*
Secretary

Thomas B. Hagen *Erie*
Treasurer

James Adavasio, Ph.D. *Erie*

Thomas W. Armstrong *Pittsburgh*

Emily Bittenbender *Shickshinny*

Perry Blatz, Ph.D. *Pittsburgh*

Hon. David J. Brightbill *Lebanon*

R. John Dawes *Alexandria*

Brent D. Glass, Ph.D. *Harrisburg*

Samuel Y. Harris *Philadelphia*

Lisa Holman *Mechanicsburg*

Hon. Ivan Itkin *Pittsburgh*

John A. Jarvis *Lancaster*

James N. Kise, AIA *Philadelphia*

Janet S. Klein *Rydal*

Ann Liacouras *Gladwyne*

M. Hannah Leavitt *Harrisburg*

Robert A. MacDonnell, Esq. *West Chester*

Lisa Wray Mazzanti *Springville*

Clyde Mills McGeary *Camp Hill*

Gail Momjian *Plymouth Meeting*

Naomi Nelson *Philadelphia*

John N. Ports *York*

Thomas R. Rippon *Mifflinburg*

Ellis L. Schmidlapp *Pittsburgh*

A. Reed Schroeder *Sewickley*

Michael Streuber *Loretto*

Hon. Patricia H. Vance *Camp Hill*

Arthur P. Ziegler, Jr. *Pittsburgh*

Philip D. Zimmerman, Ph.D. *Lancaster*

Board of Advisors

Louis J. Appell, Jr. *York*

Nora Mead Brownell *Spring House*

Mary Werner DeNadai, AIA *Chadds Ford*

Anne S. Genter *Sewickley*

Cynthia Phelps Giles *Sewickley*

Carole F. Haas *Ambler*

Henry A. Jordan, M.D. *Chester Springs*

Alvin B. Lewis, Jr., Esq. *Lancaster*

Hyman Myers, AIA *Philadelphia*

J. Craig Pepper *Erie*

Harley N. Trice, Esq. *Pittsburgh*

Lynda S. Waggoner *Mill Run*

Margaret B. Wallis *Ambler*

Staff

Caroline E. Boyce.....Executive Director

Susan Shearer.....Assistant Executive
Director/Editor

Sheila Campbell.....Communications &
Special Projects Coordinator

Bonita C. Hoke.....Development Director

Hazleton High School Hazleton, Luzerne County

Hazleton's "Castle on the Hill" was built in 1928 and has educated generations of children, originally as the city's high school and most recently as a junior high school.

Demolition of the building is sought by the school board which cites severe deterioration of the structure and the building's systems.

The board wants to construct a new school that would include a replica of the Castle's distinctive entrance.



Significance

Hazleton High School, also known as "The Castle on the Hill", is one of the city's most distinctive landmarks. Built in 1928 in the collegiate Gothic style with elaborate medieval style towers and concrete parapets, the building is now used as a junior high school with an enrollment of six hundred students.

Threat

The school suffers from years of deferred maintenance that has resulted in water penetration, problems with an outdated heating/air conditioning/ventilating system, serious structural problems and uneven wood floors caused by excess moisture from broken heating pipes. When a section of the concrete parapet above the building's main entrance fell and struck a parent, the school board met to consider whether to undertake repairs to the building or to demolish all or part of the structure.

The board's decision to demolish the building has met with opposition from the city's

mayor, Michael Marsicano, who has refused to issue a permit to remove the deteriorated facade. Other opponents of demolition have rallied to save the building and to call for funding for its repair and rehabilitation. Jean Gormley, president of the Greater Hazleton Historical Society, describes the building as a "victim of deliberate neglect." She points to the preservation of the Markle Building (Pennsylvania at Risk 1997) and says, "It was in far worse condition than the high school." Gormley credits two new school board members with questioning claims that the building is beyond repair and bringing in contractors to reassess the condition. Others on the school board remain adamant in their call for demolition and construction of a new building.

The community is polarized over the issue; and, in a time of limited financial resources, preservation is seen by some as in opposition to the need for improved technology and other upgrades to the educational curriculum.

Preserving Pennsylvania is a quarterly publication of Preservation Pennsylvania, Inc., 257 North Street, Harrisburg, PA 17101; phone 717-234-2310; fax 717-234-2522; e-mail PPA@preservationpa.org; website www.preservationpa.org

This publication has been financed in part with funds from the Pennsylvania Historical and Museum Commission. However, the contents and opinions do not necessarily reflect the views or policies of the Historical and Museum Commission, nor does the mention of trade names or commercial products constitute an endorsement or recommendation by them. Additional support is provided by membership dues and contributions. Portions of the newsletter that are not copyrighted or reprinted from other sources may be reprinted provided proper credit is given. ISSN 0888-7306

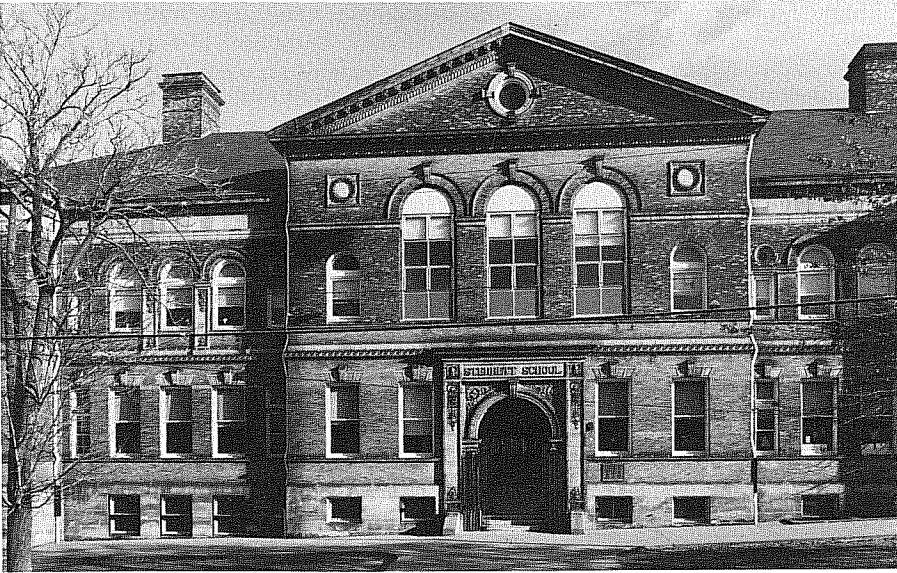
MISSION

Preservation Pennsylvania, through creative partnerships, targeted educational and advocacy programs, advisory assistance, and special projects, assists Pennsylvania communities to protect and utilize the historic resources they want to preserve for the future.

Pittsburgh Public Schools, Allegheny County

Based on a study commissioned by the Pittsburgh Board of Public Education, a 10-year capital development strategy plan calls for the closing of nine neighborhood schools, suggests the closing or demolition of four others, with three additional facilities scheduled to be renovated. The majority of those scheduled to close will be replaced with new facilities. Among the schools to be closed are the following, each of which was listed in the National Register of Historic Places in 1986 as part of a thematic nomination of city schools:

Photo: S. Kibert



The classically inspired **Sterrett School** (left) is the focal point of this Point Breeze neighborhood. Opened in 1899, it was named for James Patterson Sterrett (1822-1901), a local jurist who served for twenty years as a school director in the cities of Pittsburgh and Allegheny.

The twelve-room school is interesting not only for its impressive architecture, but also for the patronage of its wealthy neighbors. Henry Clay Frick's son, Childs Frick, attended Sterrett, and H.C. Frick contributed to the school's library, which, with over 3,000 volumes, was considered one of the most complete school libraries in America at the turn of the century.

Architecturally, Sterrett is also noteworthy for the fine natural illumination provided by large windows, for its stained glass, and for its uniquely progressive elements that included an observatory and auditorium with full stage. The closing or demolition of Sterrett is suggested in the recent Board of Education study.

McCleary School (right) has served the Lawrenceville section of the city since 1900. Built when this part of Pittsburgh was rapidly gaining a working-class population because of the opening of the nearby Lucy and Isabella blast furnaces, the school is notable for its central open space ringed by classrooms. The two-story rotunda was originally topped by a stained glass dome which has been removed. On the exterior, a flat roof has replaced the original hipped roof.

In spite of changes, the building retains much of its fine original detailing. On the exterior, the second floor has distinctive rounded arch windows detailed with Ionic columns and Florentine tracery; a beltcourse with wave motif separates the stories. On the interior, entries have floors of decorative circular tile; elaborate door surrounds, cast iron balustrades with swags and medallions, and newel posts with lion heads are among other significant interior details. The building is scheduled to be replaced with a new elementary school.



Photo: M. Aurand



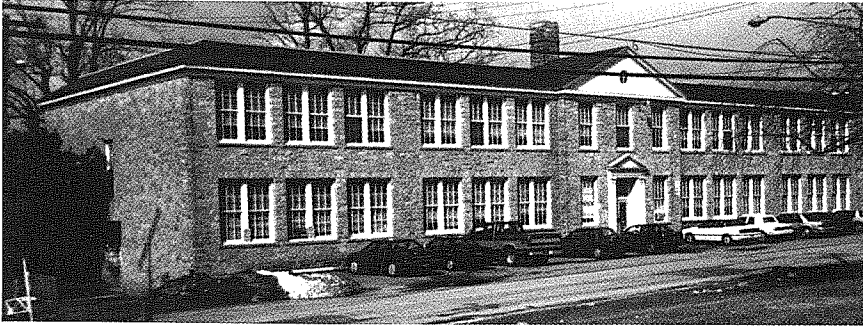
Photo: M. Aurand

The impressive 1941 Art Deco addition to the **Letsche School** (left) is the work of Marion M. Steen, staff architect for the Pittsburgh Board of Public Education between 1935 and 1954. Steen was the architect of many Pittsburgh schools, but his design for Letsche is considered one of his most significant accomplishments.

The original section of the school was constructed in 1905.

Letsche School is scheduled to close. Students will be relocated to another facility and the building will be sold.

Roosevelt School (Claysburg-Kimmel Junior High School) Claysburg, Blair County



The restrained Classical Revival design of the 1934 Roosevelt School was the work of New Deal Civil Works Administration. Renovation of the facility is considered the most economically feasible alternative for the school board, if reimbursement can be obtained from the PA Department of Education.

Significance

Following a national trend toward school consolidations, construction of the F.D. Roosevelt School in Claysburg in 1934 signalled the end of a century old tradition of one and two room school houses for this rural community just south of Altoona.

Construction of the school was made possible by New Deal programs established during the 1930s to help the country recover from the Great Depression, and the school stands as an example of the significant impact these programs had on so many small communities. The Civil Works Administration (CWA) built the

original section of the school; the Works Progress Administration (WPA) built the 1939 auditorium/gymnasium, and the Public Works Administration (PWA) built a 1941 addition. These historic sections of the complex are of wood frame construction faced with local cut sandstone. To the north of the historic portion of the building are additions from 1954 and 1969.

Threat

In a recent feasibility study prepared for the Claysburg-Kimmel School Board, a number of options were presented for the district's facilities. For the junior high school, options range from renovations that would keep all or some of the existing building to a plan to demolish the entire complex and build new. Project costs range from a minimum of \$4.6 million for renovations to a minimum of \$14.2 million for a totally new building. Two renovation options that include demolition of the Roosevelt School would cost a minimum of \$10.2 million.

The school board proposes to renovate the school and is seeking historic designation for the building in the hopes of obtaining a waiver from the Pennsylvania Department of Education that would grant them reimbursement.

Downingtown Junior High School Downingtown, Chester County

Significance

Downingtown Junior High School, originally used as a junior-senior high school, was opened in 1932. The three story building is constructed of masonry exterior walls, steel and wood framed floors, and a wood framed roof. Additions to the building were made in 1952 and 1977.

Threat

The Downingtown Area School District proposal to construct a new middle school brought into question the fate of the junior high school. A feasibility study commissioned in 1997 by the district offered a number of options, including reusing the building for educational or other purposes, or demolishing the structure and using the lot for a new building or parking.

For the time being, the building is being used as a 9th grade school. According to Gilbert Lappano, director of facilities, this use is projected to continue until the year 2002, at which time the district will review the situation and make a further determination on the future of the building.



Photo: Calabrese Architects, Leola

The imposing facade of the Downingtown Junior High School, with its large steel framed windows and monolithic stone facade, dominates its site on Manor Avenue.

Meadville (Junior) High School

Meadville, Crawford County

Significance

In the opening years of the twentieth century, Meadville was a prosperous, growing community. Spirella Corset, the Hookless Fastener (Talon zippers), Erie Railroad headquarters, Keystone View, several forging and heavy castings manufacturers such as Page Boiler Works and Meadville Malleable, not only created full employment but raised the skills and educational levels required from employees. By 1910, a decision was made to build a new high school on the city's central commons area known as Diamond Park. The school was completed in 1921.

Designed in the collegiate Gothic style popular in the 1920s, the building's H-shape plan included an auditorium, two gyms for physical education and extramural sports, a spacious library, shop and domestic arts spaces, and classrooms. A court area faced the Diamond, around which stand the courthouse, the public library, the armory, four churches, and several mansions.

Threat

In the 1950s, with increased enrollments due to regionalization, the school was made the junior high school and a new senior high school was built on the eastern boundary of the city. In the past decade, the school board voted to build a new junior high school as well, which meant the closing of the building on Diamond Park. There is local concern that the school board may sell the building to a developer with plans to tear it down and replace it with a retail/office structure. Community support for finding a use for the building is growing and the Meadville Area Coalition is leading the search for a preservation oriented developer to offer a viable alternative.



Meadville High School was built in 1921 on the northern edge of the city's historic core, Diamond Park.

The school board's decision to build a new facility has meant the closing of the school, and it is currently threatened with demolition by a developer who would replace it with a retail/office building.

Hershey Consolidated School

Derry Township, Dauphin County

Significance

Milton Shavely Hershey had great faith in the youth of America and wanted to give the best in education to the children of Derry Township, the home of his chocolate-making empire. In 1914 he funded the entire construction of the Hershey Consolidated School, which combined a number of small, isolated schools into one large educational institution.

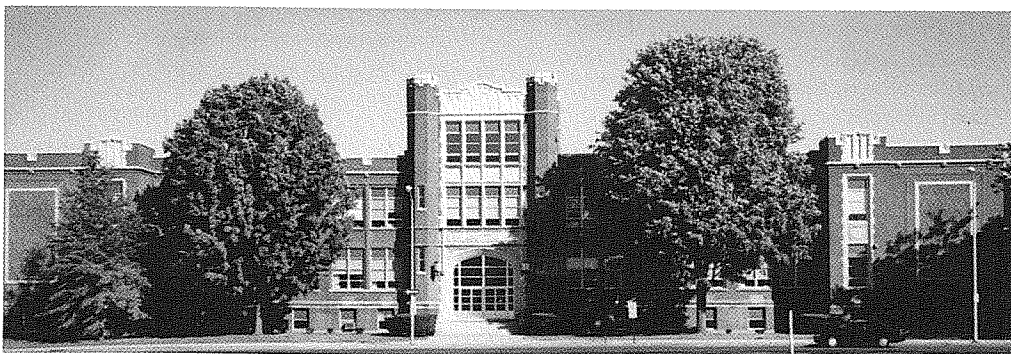
In 1925 Hershey added a Junior/Senior High School, and in 1929 the complex was completed with the addition of a vocational school. Built without the use of taxpayer money and with all of the most modern facilities of the time, the buildings form a great semicircle on Granada Avenue in Derry Township.

Threat

Through the years these buildings have undergone various changes in both appearance and function. The original Junior/Senior High School is now the rehabilitated Middle School with the additions of both a new high school and new elementary school. While these changes are positive, the Consolidated School, the first M.S. Hershey School, is threatened.

The building is no longer used for classes. It is now vacant with the exception of a few spaces being rented to nonprofit organizations and used by the school district for maintenance and grounds keeping.

There have been proposals for the rehabilitation of the building into condominiums or offices with a community center; but, to date, no decision has been reached.



Designed in a combination of Colonial Revival and collegiate Gothic styles, the Derry Township complex of educational buildings constructed between 1914 and 1929 were financed entirely by Milton S. Hershey. The new schools educated the children of workers at Hershey's chocolate-making company in a central, consolidated facility, considered an innovation and improvement over smaller, isolated school buildings.

Contributors to this issue:

Christine Piazza, Intern, Bureau for Historic Preservation
 Calabrese Architects, Inc., Leola
 Glen Cherepon, Citizens Forum of the Ridley School District
 Jonathan E. Dailey, Johnstown
 Jean Gormley, Greater Hazleton Historical Society
 Anne W. Stewart, Meadville Area Coalition
 Bonnie Wilkinson, Bureau for Historic Preservation

Broad Street School

Jersey Shore, Lycoming County

Significance

Located in the Jersey Shore Historic District, the Broad Street School is a two and a half story, vernacular style, brick masonry building constructed in 1885 with a two and a half story addition added in 1905. The school served the educational need of the community for ninety-five years despite numerous floods from the Susquehanna River. Closed as a school in 1970, the building was used as offices by the Jersey Shore Area School District until 1996. The historic district was listed in the National Register of Historic Places in 1975.

Threat

Since 1996 the school has sat vacant despite efforts to sell the building by the Jersey Shore Area School Board and the Borough of Jersey Shore. A potential buyer is interested in rehabilitating it into 24-30 units of affordable senior citizen housing.

The site, however, presents a problem because it lies within the Susquehanna River's 100-year flood plain. The development of this project must meet the Borough of Jersey Shore's Flood Plain Management Plan, which is based on FEMA regulations in order to qualify for the National Flood Insurance Program.

As part of FEMA regulations, all work within the flood plain is subject to FEMA's "Substantial Improvement Clause", but because the school is located in a National Register Historic District and has been determined to be a "historic structure" under FEMA regulation 44CFR 1 section 59.1, the potential buyer is requesting a variance from this clause. As part of the proposed rehabilitation, the developer would utilize methods of "wet-flood proofing" in order to minimize any potential damage to the building in the event of 100-year flood. It is now up to FEMA whether this school gets a second chance to serve its community.



Sited in a flood plane, Jersey Shore's Broad Street School needs a variance from FEMA to permit rehabilitation of the building for senior citizen housing.

SCHOOL REHABILITATION: IT CAN BE DONE!

Brentwood, Allegheny County

In 1995, Ron Yochum, who is on the staff of Pittsburgh History & Landmarks Foundation (PHLF), was elected to the school board in Brentwood on a platform that called for renovation rather than abandonment of three historic school buildings in the community. A plan to consolidate K-12 programs in a new building would have meant the closure of neighborhood schools and increased taxes.

The process of rehabilitating the Brentwood schools was worth the fight. By rehabilitating two schools instead of building a new one, taxpayers saved \$3.5 million and no tax increase was required. However, because of the Department of Education guidelines, all "ordinary construction" had to be removed from the buildings and substituted with steel - even though the buildings met all building code requirements with their original wood frame construction. The estimated total cost over the life of the bond for this unnecessary bureaucratic requirement is over \$1 million.

Yochum's efforts led directly to PHLF's involvement in the issue of school rehabilitations and to discussions with the Department of Education to correct their anti-preservation policy.

Wellsville, York County

When the Preservation Fund of Pennsylvania provided financial assistance to convert the William Wells Young Memorial School into offices in 1985, no one could guess that within ten years the building would be purchased by the Northern York School District and returned to educational use. With minor modifications, made in consultation with Preservation Pennsylvania and Bureau for Historic Preservation, the 1907 building once again serves the students of northern York County as an elementary school.

Scranton, Lackawanna County

Scranton Central High School remained vacant from its closing as a high school in 1989 until 1994 when it reopened as Lackawanna Junior College. Renovation of the imposing Gothic Revival building for a new era in its contribution to the educational community of Scranton continues, with work on the auditorium to be undertaken this year.

Ziegler.....continued from page 1

To check on this safety issue, Landmarks and Preservation Pennsylvania commissioned a study by Landmarks Design Associates of Pittsburgh that included an analysis of the "fire incidents" in public schools throughout the United States.

The findings show that, of 6,200 fire incidents recorded by the U.S. Fire Administration in elementary and secondary schools for the years of 1991 through 1995, there was no correlation between the construction type and the number of injuries sustained. In fact, the

continued on page 7

You are invited to join Preservation Pennsylvania

If you are not currently a member of Preservation Pennsylvania and would like to receive future quarterly issues of *Preserving Pennsylvania*, we invite you to join Pennsylvania's statewide voice for historic preservation.

In addition to *Preserving Pennsylvania*, you will receive notices of upcoming workshops, conferences, and special events; discounts on selected programs; advocacy alerts; and other information on preservation issues and initiatives across the Commonwealth.

To join, simply complete and return the membership form on page 7.

YES, I WANT TO SUPPORT A STATEWIDE VOICE FOR PENNSYLVANIA'S HERITAGE

MEMBERSHIP CATEGORIES

- | | |
|---|---------|
| <input type="checkbox"/> Individual | \$25 |
| <input type="checkbox"/> Family | \$35 |
| <input type="checkbox"/> Friend | \$35 |
| <input type="checkbox"/> Nonprofit Organization | \$40 |
| <input type="checkbox"/> Associate | \$50 |
| <input type="checkbox"/> Patron/Professional | \$100 |
| <input type="checkbox"/> Supporter | \$250 |
| <input type="checkbox"/> Benefactor | \$500 |
| <input type="checkbox"/> Pennsylvania Heritage Club | \$1,000 |
| <input type="checkbox"/> Keystone Society | \$2,500 |

Also enclosed is my additional contribution of \$_____ to further the work of Preservation Pennsylvania. I would like to designate this contribution for _____.

- ☐ Please call me to discuss including Preservation Pennsylvania as a beneficiary under my will.

Name _____

Address _____

City _____ State _____ Zip _____

Telephone: (h) _____ (w) _____

E-mail address _____

New ☐ Renewal ☐ Change of Address ☐

Please make check payable to:

Preservation Pennsylvania

257 North Street, Harrisburg, PA 17101

Preservation Pennsylvania is officially licensed as a charitable organization in the Commonwealth of Pennsylvania. A copy of the official registration and financial information may be obtained from the Pennsylvania Department of State by calling toll free, within Pennsylvania 1-800-732-0999. Registration does not imply endorsement. Questions about Preservation Pennsylvania should be addressed to 717-234-2310. All membership contributions are tax deductible to the fullest extent of the law.

Ziegler.....continued from page 6

Fire Administration's five-year study indicated that both "protected ordinary construction" and "unprotected ordinary construction" scored similarly with 3 and 3.5 injuries per 100 incidents respectively. The score for "fire resistive construction," the most fire resistive type of construction possible, was 3.8 injuries per 100 incidents.

The PDE has said that it has made exceptions for buildings on the National Register of Historic Places, but why would a listing on the National Register make a building more fire safe than a non-listed but reusable building?

The second "guideline" is what is commonly known as the 20/60 rule. Under this arrangement, no school renovation project is eligible for reimbursement where the cost for the renovation (excluding the cost for asbestos abatement, roof replacement and site development) exceeds 60% of the replacement value.

This peculiar guideline results in local school districts being forced to abandon their historic neighborhood school buildings in order to build new ones. Because new school buildings must meet the new PDE standards requiring large acreage around them, former school sites must be abandoned as well. No longer can a school function by standing in a neighborhood or being located as a part of an architectural continuum along a street, but it must be set back and surrounded with open land, much like a Wal-Mart.

The State Historic Preservation Office has said that school abandonment and resulting demolition is the number one problem for abandonment of buildings listed on the National Register statewide.

You can easily see the impact of the PDE guidelines on Allegheny County school buildings. An initial inventory completed by Landmarks shows that 74% of the school buildings

in Allegheny County were built before 1950, and many will have trouble qualifying for reuse.

Caroline Boyce, executive director of Preservation Pennsylvania, recently said, "Schools are first in the number of buildings demolished across the Commonwealth....At a time when building livable communities is the goal of so many community economic development strategies and programs, we believe that the PDE needs to make some policy changes."

The Landmarks Design Associates study confirmed that PDE guidelines are the major contributors to school abandonment: "The Pennsylvania Department of Education's prohibition against providing reimbursement for the rehabilitation of schools based solely on the use of a single construction material denies school districts the ability to rehabilitate Pennsylvania's existing school buildings. Many of them have historic or cultural value to their districts, meet all local and state building codes and fulfill the district's educational requirements. In addition, their rehabilitation may cost less than demolition and new construction."

The PDE guidelines are in conflict with the policies stated by the governor. In fact, the governor has issued an *Urban Opportunities* policy statement and page 43 calls for the reuse of existing facilities. Furthermore, Article One, Section 27 of the Pennsylvania Constitution states that the people of this Commonwealth have a right to the preservation of the natural scenic, historic, and aesthetic value of the environment in our towns and cities.

Arthur P. Ziegler, Jr. is president of Pittsburgh History & Landmarks Foundation. He also serves on the board of directors of Preservation Pennsylvania. The above article is reprinted from PHLF News, March 1998.

KEYSTONE SOCIETY

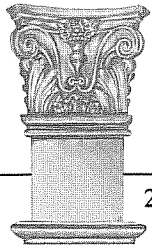
Andrew W. Mellon Foundation
 Louis J. Appell, Jr./Susquehanna Pfaltzgraff
 Claneil Foundation
 Dr. and Mrs. Harlan R. Giles
 The Glatfelter Insurance Group
 Carole F. Haas
 Thomas B. Hagen
 Kinsley Foundation
 Drew and Marilyn Lewis
 Mellon Bank
 National Park Service
 Pennsylvania Historical & Museum Commission
 The Pew Charitable Trusts
 Phoebe Haas Charitable Trust
 The Richard King Mellon Foundation
 The Roy A. Hunt Foundation
 Henry L. Rosenberger
 Wolf Foundation
 William Penn Foundation
 Wyomissing Foundation
 York Federal Savings and Loan Foundation
Keystone Society members contribute a minimum of \$2,500 annually to Preservation Pennsylvania

PENNSYLVANIA HERITAGE CLUB

Anonymous
 Robert R. Anderson Family
 Harvey Bradley
 Buhl Foundation
 Center for Rural Pennsylvania
 Eberly Foundation
 Graham Companies
 Mr. and Mrs. Donald Graham
 Dr. and Mrs. Henry A. Jordan
 Kieran Timberlake & Harris
 McEwen Trust
 National Trust for Historic Preservation
 Mary V. Pendleton
 Thomas Rippon
 York Bank and Dauphin Deposit Bank
 York Foundation
 York International Corporation
 York Water Company

Pennsylvania Heritage Club members contribute \$1,000 annually to Preservation Pennsylvania

For information on becoming a member of the Pennsylvania Heritage Club or the Keystone Society, contact Preservation Pennsylvania



Preservation
Pennsylvania

257 North Street, Harrisburg, PA 17101

Non Profit Org.
U.S. Postage
PAID
Permit No. 521
Harrisburg, PA

What You Can Do:

In discussions with the Pennsylvania Department of Education (PDE), Preservation Pennsylvania is recommending the following changes to PDE's Basic Education Circular (BEC) on school construction reimbursement criteria:

- **Addition of a new item:** *Funding for renovations, including major repairs, and additions to existing school buildings shall be given equal consideration to new school development; preference will be given to school districts who take all reasonable efforts to preserve and protect school buildings on or eligible for the local or National Registers and rehabilitate them for continued use as school buildings; when an historic school building will be discontinued for use as a school, the Department of Education encourages school districts to develop an adaptive reuse plan that incorporates an historic preservation easement or covenant to avoid the building's abandonment or demolition.*

- **Item 4** currently reads: School buildings of more than one story which have a Labor and Industry classification of wood frame or ordinary construction (i.e. interior framing is partially or wholly of wood) are not reimbursable.

This item should be deleted. This language exceeds the standards of the Department of Labor and Industry for educational uses and other generally accepted building codes which allow for educational uses in buildings of ordinary construction with proper fire safety precautions in place.

- **Item 5a** currently reads: A renovation project will not be eligible for reimbursement if the cost for such renovations (excluding costs of asbestos abatement, roof replacement and site development) is more than 60% of the replacement value.

This item should be deleted. This formula creates a situation in which a school district would be required to spend more money to build a new school rather than spend less to renovate an existing school building. There should be no upper limit. Whether the renovation costs 60-70-80 or 100% of the replacement value is irrelevant.

- **Item 6** currently reads: The Department will consider requests for variance from these criteria when presented with documented written statements of the need for such unusual treatment. Such statements must be presented as a resolution of the Board of School Directors.

This section should be expanded to include the following: *Existing school buildings which are listed in or eligible for listing in the National Register of Historic Places will be given priority consideration in the variance process.*

You can go on record in support of the above changes by sending a letter (sample text below), with any personal statements or information, to:

Mr. Don Lunday
Deputy Secretary for Administration
Department of Education
333 Market Street
Harrisburg, PA 17126

Re: Reimbursement Criteria for Rehabilitation of Existing Schools

Dear Mr. Lunday:

Retaining neighborhood schools can play a major role in keeping older communities alive and pedestrian friendly, and in curtailing the spread of sprawl.

I am pleased to hear that the Department of Education has been considering changes to the Basic Education Circular (BEC) concerning School Construction Reimbursement Criteria. I am hopeful that the department will adopt new BEC language that will result in a more equitable reimbursement process for communities that wish to rehabilitate and continue to use their older existing school buildings. To that end, I am recommending that the department adopt the changes to the BEC that were recommended by Preservation Pennsylvania in their letter to you of April 28, 1998. I believe that these changes will provide a more level playing field for those communities seeking to rehabilitate existing older school buildings, particularly those that are historic, without compromise to safety or quality of the learning environment.

Sincerely,

Pennsylvania's Endangered Schools

June 1998

The following schools across the Commonwealth are identified as endangered. **If you know of others that are at risk,** please contact Preservation Pennsylvania so that we may add them to our inventory.

SCHOOL	COUNTY	MUNICIPALITY	STATUS/THREAT
South High	Allegheny	Pittsburgh	Scheduled to close/National Register listed 1986
Letsche School*	Allegheny	Pittsburgh	Scheduled to close/National Register listed 1986
Beltzhoover School	Allegheny	Pittsburgh	Scheduled to close/National Register listed 1986
Washington Polytechnic	Allegheny	Pittsburgh	Scheduled to close/National Register listed 1986
Baxter School	Allegheny	Pittsburgh	Scheduled to close/National Register listed 1986
Spring Hill School	Allegheny	Pittsburgh	Scheduled to close/National Register listed 1986
Woolslair Elementary School	Allegheny	Pittsburgh	Scheduled to close/National Register listed 1985
McCleary School*	Allegheny	Pittsburgh	Scheduled to close/National Register listed 1986
Miller School	Allegheny	Pittsburgh	Scheduled to close
Schiller School	Allegheny	Pittsburgh	Suggested closing or demolition/NR listed 1986
Sterrett School*	Allegheny	Pittsburgh	Suggested closing or demolition/NR listed 1986
South Hills School	Allegheny	Pittsburgh	Suggested demolition/NR listed 1985
Rodgers School	Allegheny	Pittsburgh	Suggested closing or demolish/Hist. Survey 1979
Prospect School	Allegheny	Pittsburgh	Scheduled renovation/NR listed 1986
Westinghouse School	Allegheny	Pittsburgh	Scheduled renovation/NR listed 1986
Weil Technology Institute	Allegheny	Pittsburgh	Scheduled renovation/Hist. Survey 1980
Westlake School	Allegheny	Pittsburgh	Vacant/proposed demolition
Hawkins (Milligan) School	Allegheny	Swissvale	Vacant
Longfellow (Denniston) School	Allegheny	Swissvale	Vacant/NR listed 1984
Freedom Elementary School	Beaver	Freedom	Conversion to housing
Claysburg-Kimmel Jr H. S.*	Blair	Claysburg	Proposed renovation or demolition
Nesquehoning High School	Carbon	Nesquehoning	Vacant/possible conversion to housing
Weatherly School	Carbon	Weatherly	Vacant
Coatesville (Scott) High School	Chester	Coatesville	Vacant/in historic district
Downingtown Jr High School*	Chester	Downingtown	Still used as school/in historic district
Hopewell (Oxford) School	Chester	Oxford	Vacant/demolition pending
Allport School	Clearfield	Allport	Vacant
Wilson School	Clearfield	DuBois	Vacant
DuBois Senior High School	Clearfield	DuBois	Still school/proposed renovation
Sugar Valley High School	Clinton	Loganton	Vacant/possible demolition
Meadville Jr High School*	Crawford	Meadville	Demolition
Harrisburg High School	Dauphin	Harrisburg	Proposed consolidation/uncertain future
Hershey Consolidated School*	Dauphin	Derry Twp.	Vacant/possible reuse
Ridley Senior High School*	Delaware	Ridley Park	Demolition for parking
Woodstock Valley Elementary	Huntingdon	McConnellstown	To be auctioned June 1998
Smithfield Elementary	Huntingdon	Smithfield	To be auctioned June 1998
Falls Creek Elementary	Jefferson	Falls Creek	Vacant
Jefferson Street School	Jefferson	Punxsutawney	Vacant/proposed demolition/NR eligible
North Scranton Jr High School	Lackawanna	Scranton	Vacant
Rutter Ave. Elementary School	Luzerne	Kingston	Vacant/proposed demolition
Glen Lion School	Luzerne	Newport Twp.	Vacant
H.F. Grebey Jr High School	Luzerne	Hazleton	Vacant/National Register eligible
D.A. Harman Jr High School	Luzerne	Hazleton	Vacant/National Register eligible
Hazleton High School*	Luzerne	Hazleton	Proposed demolition
St. Gabriel's School	Luzerne	Hazleton	Vacant/proposed demolition
Old Nanticoke Junior H.S.	Luzerne	Nanticoke	Vacant/possible demolition
Maffett School	Luzerne	Plains Township	Closed spring 1998
Cotton Avenue School	Luzerne	Plains Township	Closed spring 1998
Lt. Duddy School	Luzerne	Plains Township	Closed spring 1998
Plains Junior High School	Luzerne	Plains Township	Closed spring 1998
Palmer Elementary School	Luzerne	Wilkes-Barre	Vacant
Broad Street School*	Lycoming	Jersey Shore	Possible tax project/requires FEMA approval
Rupert Elementary School	Montgomery	Pottstown	Demolition threatened 1997/decision deferred
Garfield School	Schuylkill	Pottsville	Demolition
Tamaqua Junior H.S.	Schuylkill	Tamaqua	Proposed construction of new school

* Profiled in this issue of *Preserving Pennsylvania*

Pennsylvania's Endangered Heritage

*The following properties have been included in past listings of **Pennsylvania At Risk**. Those with * have had a positive preservation outcome; those with ** have been lost. The other listed properties remain at risk.*

1992

Astor Theater, Reading
Bedford Springs Hotel, Bedford
Brith Shalom Synagogue, Easton
Carrie Furnaces, Swissvale, Allegheny Co.
Danville West Market Street Historic District, Danville
Deshong Estate, Chester
East Broadtop Railroad, Rockhill Furnace, Huntingdon Co.
Eastern State Penitentiary, Philadelphia
Highway Routes 23 & 30 expansion projects, Lancaster Co.
Lackawanna Avenue Historic District**
Legionville Campground, Harmony Township, Beaver Co.
Lynnewood Hall, Cheltenham Township, Montgomery Co.
Meason House, Dunbar Township, Fayette Co.
Native American Ossuary, North East, Erie Co.*
Park Home, Williamsport
Selma, Norristown, Montgomery Co.
Star Barn, Lower Swatara Township, Dauphin Co.
Stegmaier Brewery, Wilkes-Barre*
United States Naval Home, Philadelphia

1993

Borg Warner Complex, York*
Church of St. Michael the Archangel, Pittsburgh
Colonial Theater, Lebanon
Delaware Canal
Erie City and County Library*
Glassworks and Greensboro, Greene Co., and New Geneva, Fayette Co.
King of Prussia Inn, Montgomery Co.
Knowlton, Philadelphia
Memorial Park, Lock Haven
Mountain Springs Hotel, Ephrata, Lancaster Co.
Palace Hotel, Windber, Somerset Co.**
Path Valley Turnpike Rest Stop, Franklin Co.**
S.S. Grand View Point Hotel, Bedford Co.
St. Severin Church, Drifting, Clearfield Co.
Searights Tollhouse, Fayette Co.
Victory Building, Philadelphia

1994

Armstrong Cork Company Complex, Pittsburgh
Bomberger's Distillery, Heidelberg Township, Lebanon Co.
Brandywine Battlefield, Chester & Delaware Counties
Glosser Brothers Department Store, Johnstown
Huber Breaker, Ashley, Luzerne Co.
Keller's Covered Bridge, Ephrata Township, Lancaster Co.
Lancaster County (entire county)
Motor Vessel/Steamship Niagara, Erie**
Philadelphia Savings Fund Society (PSFS) Building, Philadelphia
Shoe House, Hellam, York Co.*
Vera Cruz Jasper Quarry, Upper Milford Township, Lehigh Co.

Pennsylvania at Risk is published annually by Preservation Pennsylvania. The list is a representative sampling of the variety and richness of our Commonwealth's historic properties and the types and severity of threats they face.

The list is compiled from recommendations made by our members, local heritage organizations, the board and staff of Preservation Pennsylvania, and the Bureau for Historic Preservation, Pennsylvania Historical and Museum Commission.

In addition to the annual listing, released each spring, Preservation Pennsylvania will occasionally add to the endangered list in the summer, fall, and winter issues of this newsletter in response to timely threats to significant historic properties.

Criteria for listing are:

- the property is listed or determined eligible for listing in the National Register of Historic Places, **or**
- the property is considered a contributing structure in a National Register Historic District, **or**
- the property is designated historic by local government, **and**
- the property is faced with imminent, recognized endangerment either from overt action, neglect, incompatible use, or loss of context.

1995

Allegheny River Boulevard, Allegheny Co.
Allentown National Bank, Allentown
George Carroll House, Erie*
Leap the Dips, Lakemont Park, Altoona
Lock and Dam 7, Monongahela River, Greene and Fayette Counties
John McCullough House, West Pennsboro Township, Cumberland Co.
Moland House, Warwick Township, Bucks Co.
Oley Township Historic District, Berks Co.
Penn Square, Callowhill Historic District, Reading
Plymouth Flats Archeological Sites, Plymouth Township, Luzerne Co.
Sigmund Lubin Studio, Philadelphia**

1996

Auto & Aeroplane Mechanical School, Harrisburg**
Bangor Swimming Pool, Bangor, Northampton Co.**
Enola Low Grade Railroad Line, Lancaster Co.
Howe-Childs Gaatway House, Pittsburgh
Knox Building (Cascade Theater), New Castle, Lawrence Co.
Morss Mansion, Simpson, Lackawanna Co.**
Naval Hospital, Philadelphia
Phoenix Iron & Steel Company Foundry Building, Phoenixville, Chester Co.
Walnut Street Bridge, Dauphin & Cumberland Co.

1997

Cambria Ironworks, Johnstown
Camp Letterman, Gettysburg
Capital Area Greenbelt, Harrisburg
Coal Oil Johnny House, Venango County
Church Street Station, Market-Frankford Elevated, Philadelphia
Jackson Koehler Eagle Brewery, Erie
Logan House, Philadelphia
Markle Banking & Trust Company, Hazleton
Roger Hunt Hill & Miller's House, Downingtown, Chester County
Scanlon Observatory, Pittsburgh*

Preservation Pennsylvania welcomes your comments on this year's list and your suggestions for future listings